

How to access Lotteries iLearn

NSW Lotteries training is on the Internet

In the September 2007 Roadshow you would have heard all about Lotteries iLearn.

Lotteries iLearn is our on-line agent training which is available via the Internet. All you have to do is register for a username and password through the Lotteries iLearn Home Screen.

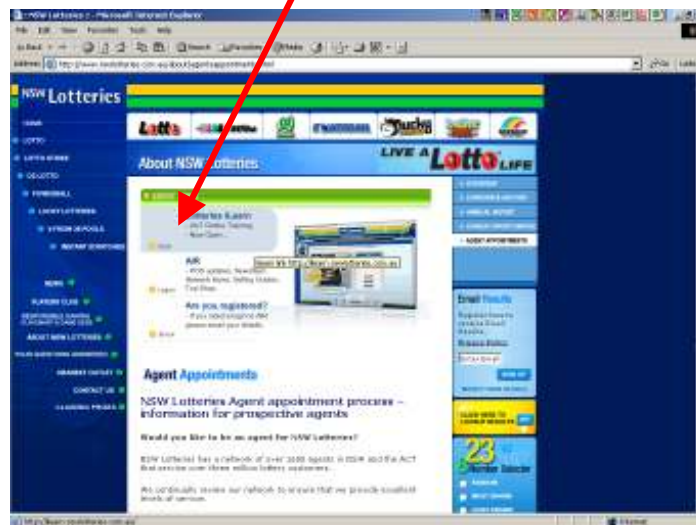
Once you apply for a user name and password, your application for access to Lotteries iLearn will be verified at NSW Lotteries, and an email will be sent to you with your username and initial password.

To get access to Lotteries iLearn follow these simple instructions:

- Open the NSW Lotteries website... i.e. www.nswlotteries.com.au



- Towards the bottom of the screen, click on the link "Our Agents"
- A screen will open containing information for NSW Lotteries Agents - Click on the Lotteries iLearn link towards the top of this screen



The Lotteries iLearn home page will open up after a short while – Before using Lotteries iLearn you must first obtain an iLearn username and password

- If a blank blue screen appears that asks you to “Click here if the Log-in page does not appear automatically” – click on this link and the Log-in page will open.

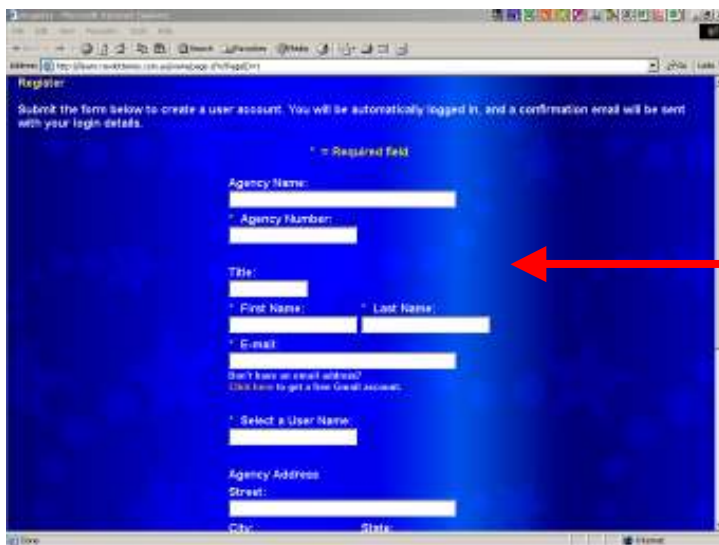
If a question dialogue box appears as shown below asking to close this window, click “Yes” and the dialogue box will disappear



- Click on the link that reads –

First time users must register by clicking here. Otherwise enter your Lotteries iLearn user name and password above

- This will open the Lotteries iLearn Registration Screen.
- Enter your iLearn registration details to apply for a Lotteries iLearn username and password. Each user has a separate and individual username and password.



Complete all fields where possible on this registration screen

- After entering the information click the “Apply” button at the bottom of the registration screen

- After your application is verified by NSW Lotteries, you will receive a confirmation email containing your username and initial password.
- Go back into the Lotteries iLearn Home Screen and type in your username and password.
- It is recommended that you then change your password to something more personal and that you will remember. To do this:
 - Click on “Settings” on the top menu
 - Click “Personal” on the menu that appears to the left of the screen
 - Click “Change My Password” and follow the on screen instruction.

Note: There is also a link to the Lotteries iLearn Log-in Home Page through the Agent Website (Agent information Resource) if you have access.

Important Note: Your username and password for Lotteries iLearn is *not the same* as what you use for the Agents' Website. You MUST register following the above steps in order use iLearn.

If you have any queries on how to access or use Lotteries iLearn contact Michael Kennis on 9752-5795

Michael Kennis
Training Manager